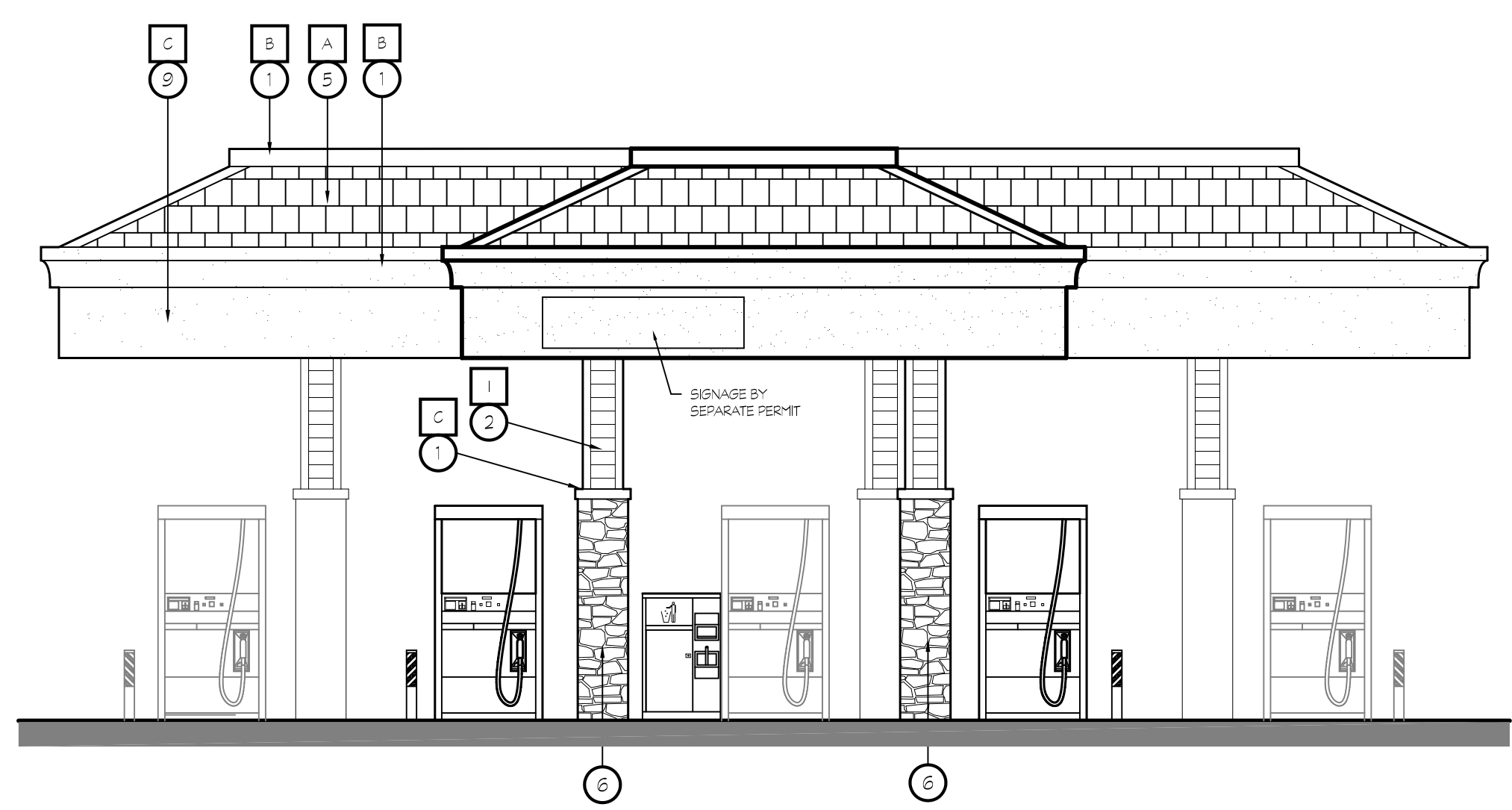


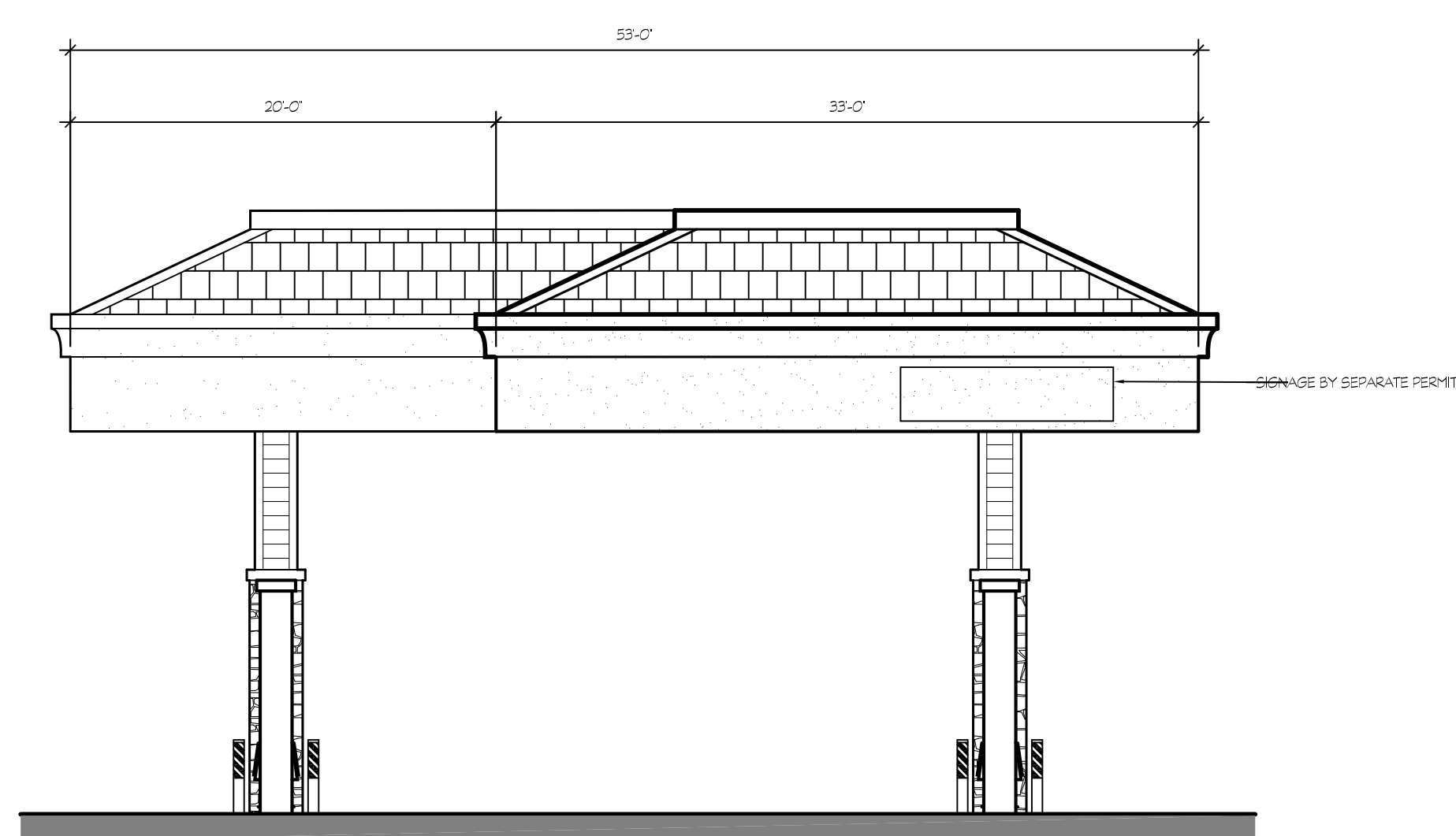
1 EAST SIDE ELEVATION

SCALE: 3/16" = 1'-0"



2 FIDDYMENT ROAD ELEVATION

SCALE: 3/16" = 1'-0"



3 ANGUS STREET ELEVATION

SCALE: 3/16" = 1'-0"

KEY NOTES

- ① PAINTED CORNICE
- ② HARDIE PLANK WITH TRIM TO MATCH BUILDING
- ③ SIGN BY SEPARATE PERMIT
- ④ 6' GUARD POST- SEE DETAIL 4, SHEET A104
- ⑤ CONC. ROOF TILES: EAGLE ROOFING: GOLDEN EAGLE: 1634 KINGS CANYON BLEND
- ⑥ CORANADO STONE OVER EXTERIOR CEMENT PLASTER OVER METAL LATH OVER DUPONT TYVEK DRAINWRAP
- ⑦ STONE CAP
- ⑧ MULTI-PRODUCT FUEL DISPENSER
- ⑨ 7/8" THREE COAT STUCCO SYSTEM OVER DUPONT TYVEK DRAINWRAP
- ⑩ WINDSHIELD VALET & TRASH RECEPTACLE
- ⑪ ROOF TILE RIDGE

COLOR LEGENDS

- A EAGLE ROOFING: PROFILE: GOLDEN EAGLE, COLOR: 1634 KINGS CANYON BLEND
- B DUNN EDWARDS: DEC790 'ICE GRAY'
- C DUNN EDWARDS: DEC789 'LIGHT GRAY'
- D DUNN EDWARDS: DEC750 'BISON BEIGE'
- E DUNN EDWARDS: DET489 'PRAIRIE LAND'



K12 Architects, Inc
 3090 Fite Circle, #104
 Sacramento, CA 95827
 PH:(916) 455-6500 FAX:(916) 455-8100

CONSULTANTS:

CONTRACTOR:

PROJECT:

FIDDYMENT PLAZA

NEW CONVENIENCE STORE WITH FUELING, SHELL RETAIL TENANT SPACE

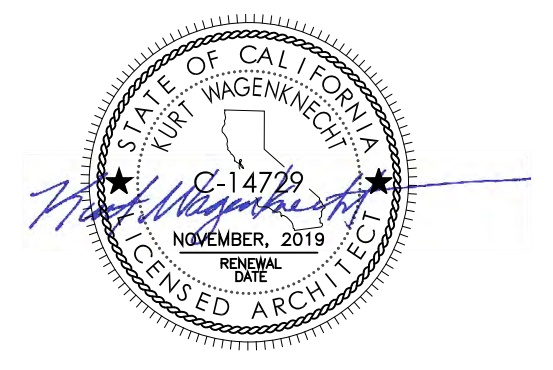
**4701 Fiddymment Road
 Roseville, California 95747**

DEVELOPER:

**DHILLON AND SONS ENTERPRISES
 201 Bellingham ct
 Lincoln, CA 95648**

REVISIONS:

PROFESSIONAL SEALS:



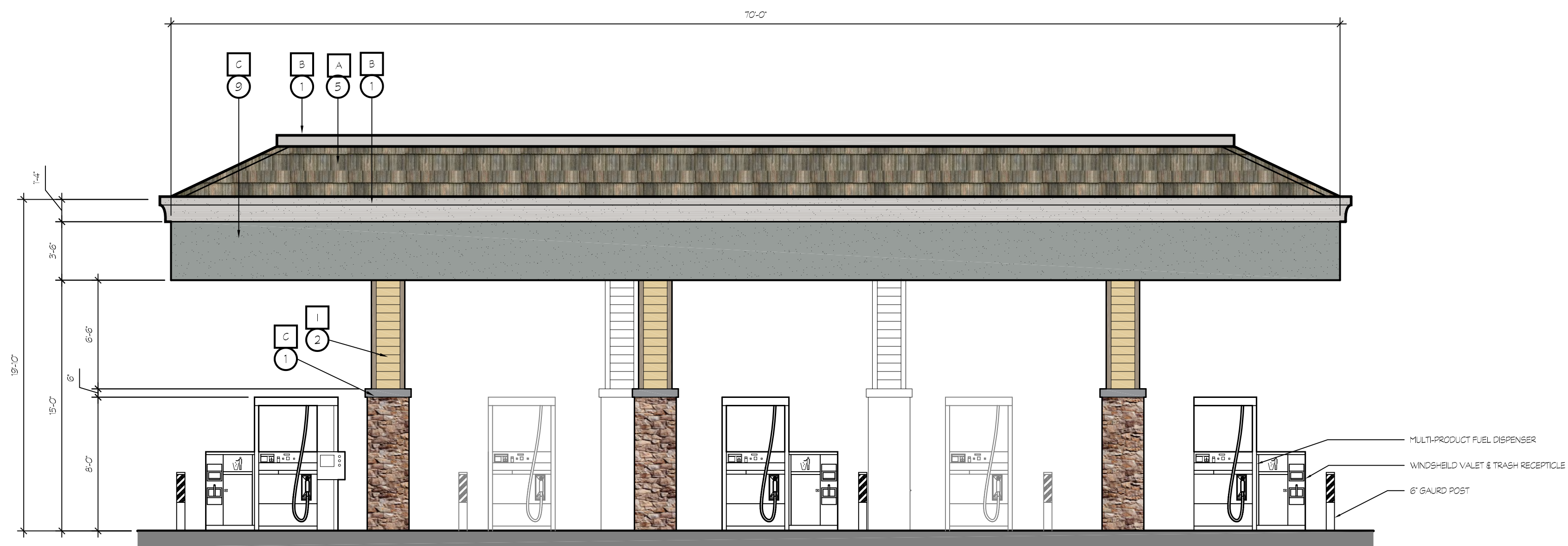
PROJECT NUMBER: **16-021** PROJECT DATE: **8-10-2018**

SHEET CONTENTS:

CANOPY ELEVATION

SHEET NUMBER:

A901



1 EAST SIDE ELEVATION

SCALE: 3/16" = 1'-0"

KEY NOTES

- ① PAINTED CORNICE
- ② HARDIE PLANK WITH TRIM TO MATCH BUILDING
- ③ SIGN BY SEPARATE PERMIT
- ④ 6' GUARD POST- SEE DETAIL 4, SHEET A104
- ⑤ CONC. ROOF TILES: EAGLE ROOFING: GOLDEN EAGLE: 1634 KINGS CANYON BLEND
- ⑥ CORANADO STONE OVER EXTERIOR CEMENT PLASTER OVER METAL LATH OVER DUPONT TYVEK DRAINWRAP
- ⑦ STONE CAP
- ⑧ MULTI-PRODUCT FUEL DISPENSER
- ⑨ 7/8" THREE COAT STUCCO SYSTEM OVER DUPONT TYVEK DRAINWRAP
- ⑩ WINDSHIELD VALET & TRASH RECEPTACLE
- ⑪ ROOF TILE RIDGE

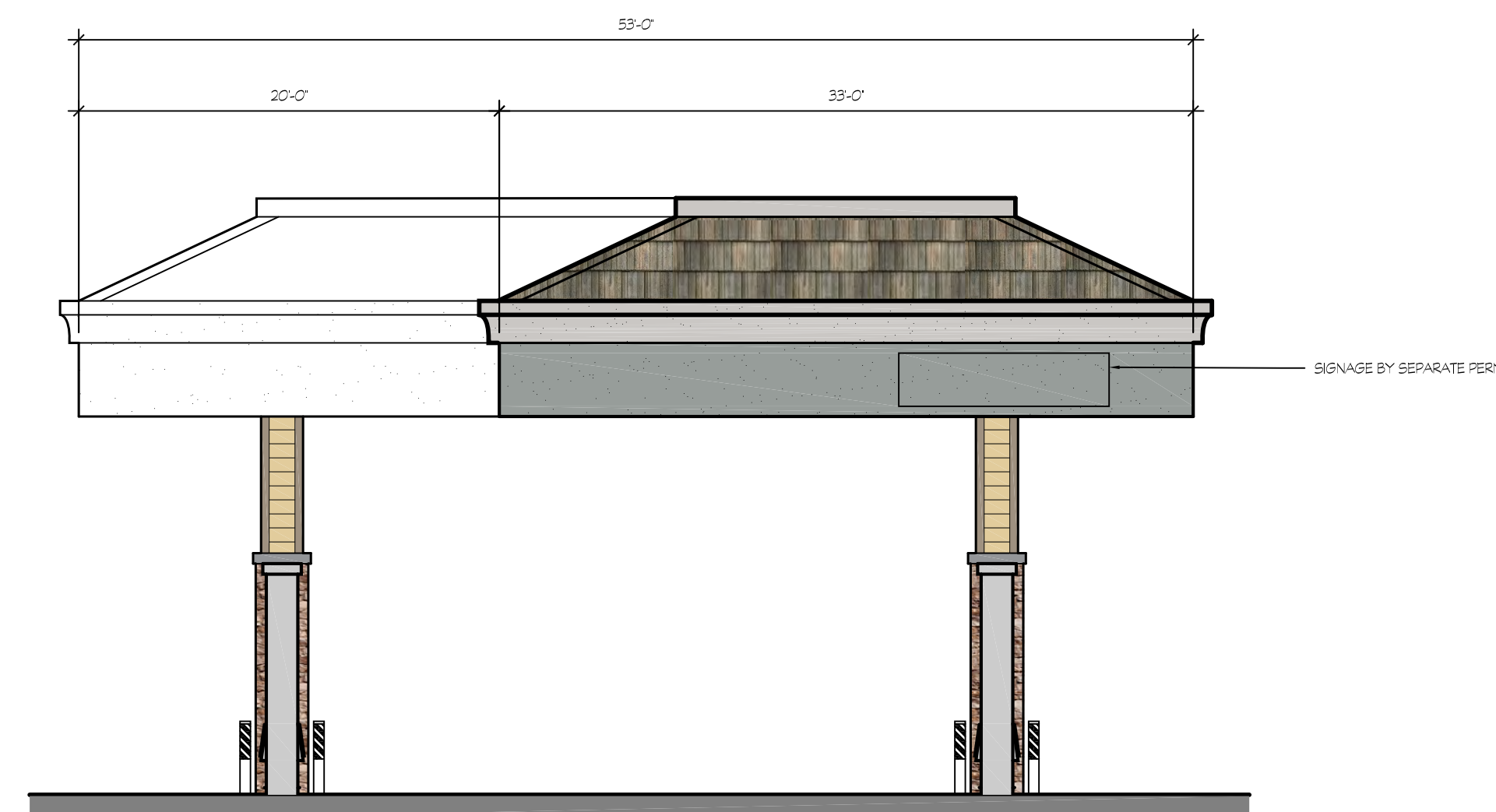
COLOR LEGENDS

- A EAGLE ROOFING: PROFILE: GOLDEN EAGLE, COLOR: 1634 KINGS CANYON BLEND
- B DUNN EDWARDS: DEC790 'ICE GRAY'
- C DUNN EDWARDS: DEC789 'LIGHT GRAY'
- D DUNN EDWARDS: DEC750 'BISON BEIGE'
- E DUNN EDWARDS: DET489 'PRAIRIE LAND'



2 FIDDYMENT ROAD ELEVATION

SCALE: 3/16" = 1'-0"



3 ANGUS STREET ELEVATION

SCALE: 3/16" = 1'-0"



Architects

K12 Architects, Inc
3090 Fite Circle, #104
Sacramento, CA 95827

PH:(916) 455-6500 FAX:(916) 455-8100

CONSULTANTS:

CONTRACTOR:

PROJECT:

**FIDDYMENT
PLAZA**

**NEW CONVENIENCE STORE
WITH FUELING,
SHELL RETAIL TENANT SPACE**

**4701 Fiddymment Road
Roseville, California 95747**

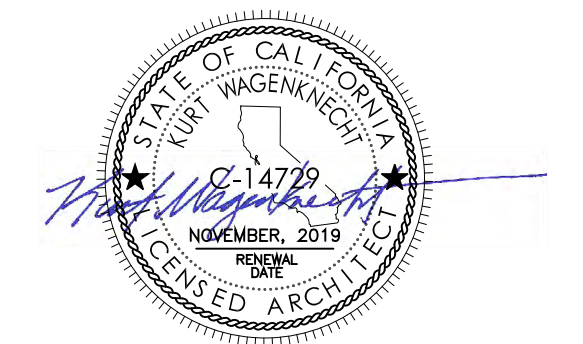
DEVELOPER:

**DHILLON AND SONS
ENTERPRISES**

**201 Bellingham ct
Lincoln, CA 95648**

REVISIONS:

PROFESSIONAL SEALS:



PROJECT NUMBER: **16-021** PROJECT DATE: **8-10-2018**

SHEET CONTENTS:

**CANOPY COLOR
ELEVATION**

SHEET NUMBER:

A902